

**Synonym**

PD-L1,CD274,B7-H1,PDCD1L1,PDCD1LG1

**Source**

Mouse PD-L1, Mouse IgG2a Fc Tag, low endotoxin(PD1-M52A2) is expressed from human 293 cells (HEK293). It contains AA Phe 19 - Thr 238 (Accession # [NP\\_068693](#) ).

Predicted N-terminus: Phe 19

**Molecular Characterization**

PD-L1(Phe 19 - Thr 238) NP_068693	mFc(Glu 98 - Lys 330) P01863
--------------------------------------	---------------------------------

This protein carries a mouse IgG2a Fc tag at the C-terminus.

The protein has a calculated MW of 51.8 kDa. The protein migrates as 65-85 kDa under reducing (R) condition (SDS-PAGE) due to glycosylation.

**Endotoxin**

Less than 0.1 EU per µg by the LAL method.

**Purity**

>95% as determined by SDS-PAGE.

**Formulation**

Lyophilized from 0.22 µm filtered solution in PBS, pH7.4 with trehalose as protectant.

Contact us for customized product form or formulation.

**Reconstitution**

Please see Certificate of Analysis for specific instructions.

*For best performance, we strongly recommend you to follow the reconstitution protocol provided in the CoA.*

**Storage**

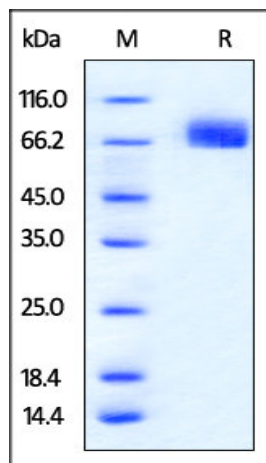
For long term storage, the product should be stored at lyophilized state at -20°C or lower.

*Please avoid repeated freeze-thaw cycles.*

This product is stable after storage at:

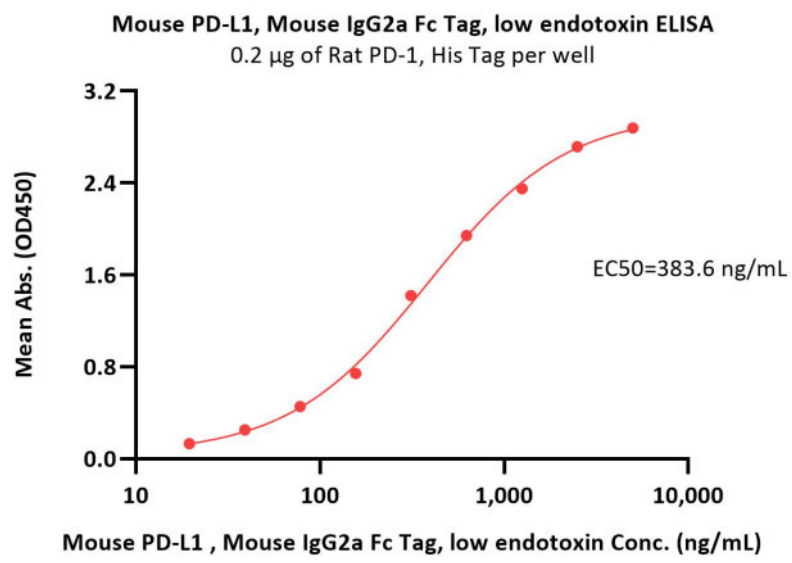
- -20°C to -70°C for 12 months in lyophilized state;
- -70°C for 3 months under sterile conditions after reconstitution.

**SDS-PAGE**

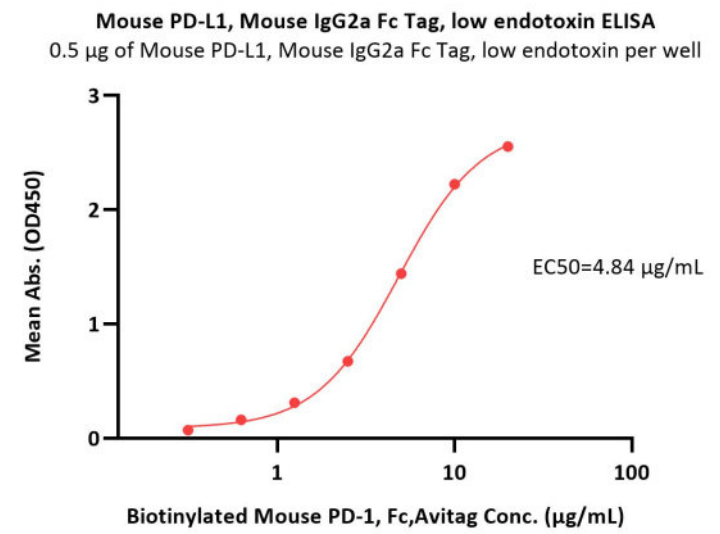


Mouse PD-L1, Mouse IgG2a Fc Tag, low endotoxin on SDS-PAGE under reducing (R) condition. The gel was stained with Coomassie Blue. The purity of the protein is greater than 95%.

**Bioactivity-ELISA**



Immobilized Rat PD-1, His Tag (Cat. No. PD1-R52H2) at 2 µg/mL (100 µL/well) can bind Mouse PD-L1, Mouse IgG2a Fc Tag, low endotoxin (Cat. No. PD1-M52A2) with a linear range of 20-625 ng/mL (QC tested).



Immobilized Mouse PD-L1, Mouse IgG2a Fc Tag, low endotoxin (Cat. No. PD1-M52A2) at 5 µg/mL (100 µL/well) can bind Biotinylated Mouse PD-1, Fc,Avitag (Cat. No. PD1-M82F4) with a linear range of 0.313-5 µg/mL (Routinely tested).

## Background

Programmed cell death 1 ligand 1 (PDL1) is also known as B7-H, B7H1, MGC142294, MGC142296, PD-L1, PDCD1L1 and PDCD1LG1, which is a member of the growing B7 family of immune molecules and is involved in the regulation of cellular and humoral immune responses. PDL1 is a cell surface immunoglobulin superfamily with two Ig-like domains within the extracellular region and a short cytoplasmic domain. This protein is broadly expressed in the majority of peripheral tissues as well as hematopoietic cells. Interaction between PDL1 and its receptors belonging to the CD28 family of molecules provide both stimulatory and inhibitory signals in regulating T cell activation and tolerance. PDL1 may inhibit ongoing T-cell responses by inducing apoptosis and arresting cell-cycle progression.

## Clinical and Translational Updates

Please contact us via [TechSupport@acrobiosystems.com](mailto:TechSupport@acrobiosystems.com) if you have any question on this product.