



Synonym

PD-L1,CD274,B7-H1,PDCD1L1,PDCD1LG1

Source

Mouse PD-L1, Fc Tag(PD1-M5251) is expressed from human 293 cells (HEK293). It contains AA Phe 19 - Thr 238 (Accession # [NP_068693](#)).

Predicted N-terminus: Phe 19

Molecular Characterization

PD-L1(Phe 19 - Thr 238) NP_068693	Fc(Pro 100 - Lys 330) P01857
--------------------------------------	---------------------------------

This protein carries a human IgG1 Fc tag at the C-terminus.

The protein has a calculated MW of 51.4 kDa. The protein migrates as 60-80 kDa under reducing (R) condition (SDS-PAGE) due to glycosylation.

Endotoxin

Less than 1.0 EU per µg by the LAL method.

Purity

>95% as determined by SDS-PAGE.

>90% as determined by SEC-MALS.

Formulation

Lyophilized from 0.22 µm filtered solution in Tris with Glycine, Arginine and NaCl, pH7.5 with trehalose as protectant.

Contact us for customized product form or formulation.

Reconstitution

Please see Certificate of Analysis for specific instructions.

For best performance, we strongly recommend you to follow the reconstitution protocol provided in the CoA.

Storage

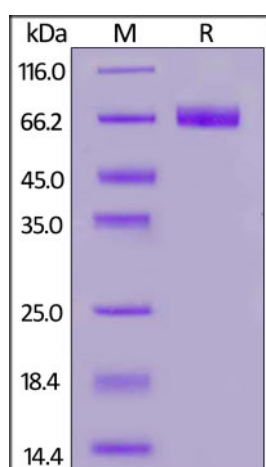
For long term storage, the product should be stored at lyophilized state at -20°C or lower.

Please avoid repeated freeze-thaw cycles.

This product is stable after storage at:

- -20°C to -70°C for 12 months in lyophilized state;
- -70°C for 3 months under sterile conditions after reconstitution.

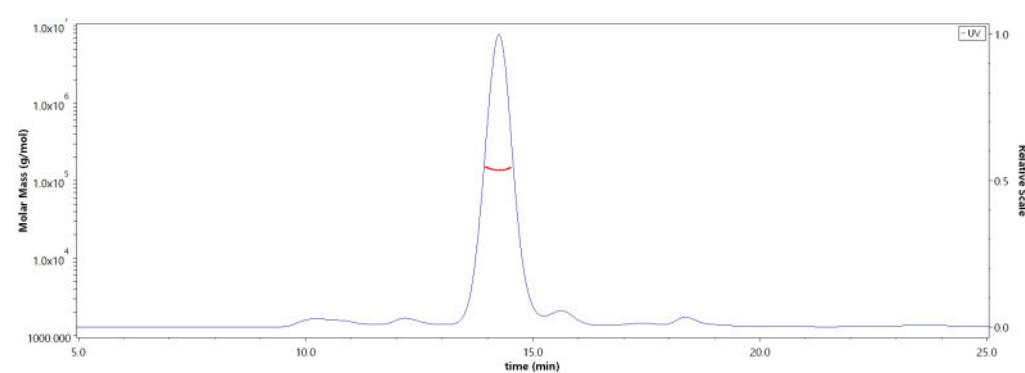
SDS-PAGE



Mouse PD-L1, Fc Tag on SDS-PAGE under reducing (R) condition. The gel was stained with Coomassie Blue. The purity of the protein is greater than 95%.

Bioactivity-ELISA

SEC-MALS



The purity of Mouse PD-L1, Fc Tag (Cat. No. PD1-M5251) is more than 90% and the molecular weight of this protein is around 120-150 kDa verified by SEC-MALS.

[Report](#)

Discounts, Gifts,
and more!

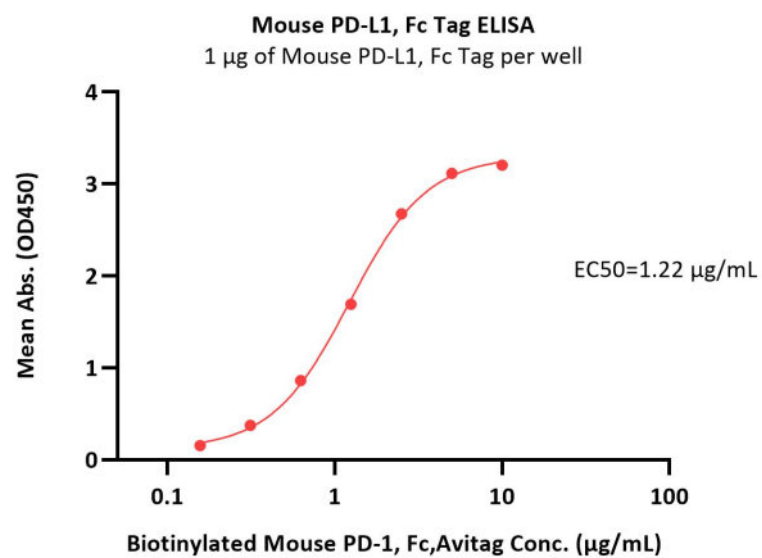


Mouse PD-L1 / B7-H1 Protein, Fc Tag (MALS verified)

Catalog # PD1-M5251

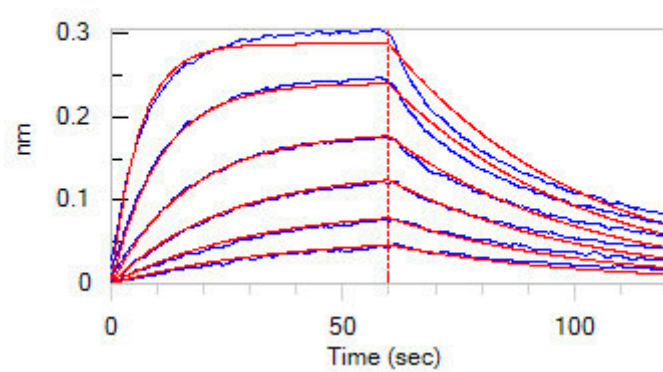


BIOSYSTEMS
Acro
Surprise Inside!



Immobilized Mouse PD-L1, Fc Tag (Cat. No. PD1-M5251) at 10 μ g/mL (100 μ L/well) can bind Biotinylated Mouse PD-1, Fc, Avitag (Cat. No. PD1-M82F4) with a linear range of 0.156-2.5 μ g/mL (QC tested).

Bioactivity-BLI



Loaded Human PD-1, His Tag (HPLC-verified) (Cat. No. PD1-H5221) on HIS1K Biosensor, can bind Mouse PD-L1, Fc Tag (Cat. No. PD1-M5251) with an affinity constant of 41.6 nM as determined in BLI assay (ForteBio Octet Red96e) (Routinely tested).

Background

Programmed cell death 1 ligand 1 (PDL1) is also known as B7-H, B7H1, MGC142294, MGC142296, PD-L1, PDCD1L1 and PDCD1LG1, which is a member of the growing B7 family of immune molecules and is involved in the regulation of cellular and humoral immune responses. PDL1 is a cell surface immunoglobulin superfamily with two Ig-like domains within the extracellular region and a short cytoplasmic domain. This protein is broadly expressed in the majority of peripheral tissues as well as hematopoietic cells. Interaction between PDL1 and its receptors belonging to the CD28 family of molecules provide both stimulatory and inhibitory signals in regulating T cell activation and tolerance. PDL1 may inhibit ongoing T-cell responses by inducing apoptosis and arresting cell-cycle progression.

Clinical and Translational Updates

Discounts, Gifts,
and more!



www.acrobiosystems.com

9/19/2024