

**Synonym**

4Ig-B7-H3,B7-H3,CD276,PSEC0249,UNQ309,PRO352,B7 homolog 3

**Source**

Human B7-H3 (4Ig), Fc Tag(B7B-H5258) is expressed from human 293 cells (HEK293). It contains AA Gly 27 - Thr 461 (Accession # [Q5ZPR3-1](#)).

Predicted N-terminus: Gly 27

**Molecular Characterization**

B7-H3 (4Ig)(Gly 27 - Thr 461) Q5ZPR3-1	Fc(Pro 100 - Lys 330) P01857
---	---------------------------------

This protein carries a human IgG1 Fc tag at the C-terminus

The protein has a calculated MW of 73.1 kDa. The protein migrates as 100-110 kDa under reducing (R) condition (SDS-PAGE) due to glycosylation.

**Endotoxin**

Less than 1.0 EU per µg by the LAL method.

**Purity**

>95% as determined by SDS-PAGE.

**Formulation**

Lyophilized from 0.22 µm filtered solution in PBS, pH7.4 with trehalose as protectant.

Contact us for customized product form or formulation.

**Reconstitution**

Please see Certificate of Analysis for specific instructions.

*For best performance, we strongly recommend you to follow the reconstitution protocol provided in the CoA.*

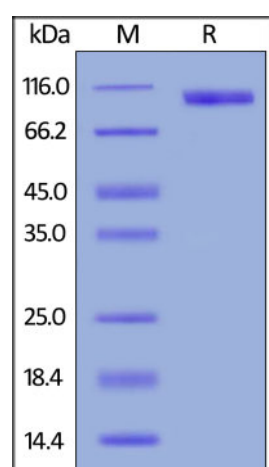
**Storage**

For long term storage, the product should be stored at lyophilized state at -20°C or lower.

*Please avoid repeated freeze-thaw cycles.*

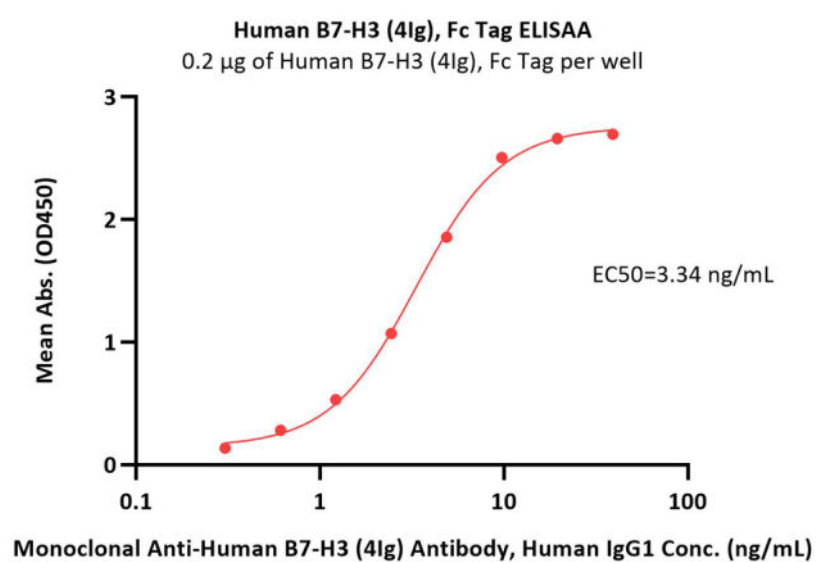
This product is stable after storage at:

- -20°C to -70°C for 12 months in lyophilized state;
- -70°C for 3 months under sterile conditions after reconstitution.

**SDS-PAGE**

Human B7-H3 (4Ig), Fc Tag on SDS-PAGE under reducing (R) condition. The gel was stained overnight with Coomassie Blue. The purity of the protein is greater than 95%.

**Bioactivity-ELISA**



Immobilized Human B7-H3 (4Ig), Fc Tag (Cat. No. B7B-H5258) at 2 µg/mL (100 µL/well) can bind Monoclonal Anti-Human B7-H3 / B7-H3 (4Ig) Antibody, Human IgG1 with a linear range of 0.3-5 ng/mL (QC tested).

## Background

Human B7 homolog 3 (B7-H3) is a member of the B7 family of immune proteins that provide signals for the regulation of immune responses. Other family members include B7-1, B7-2, B7-H1/PD-L1, B7-H2, and PD-L2. B7 family proteins are type I transmembrane immunoglobulin (Ig) superfamily members that contain extracellular Ig V-like and Ig C-like domains with a short cytoplasmic tail. Termed 4IgB7-H3 or B7-H3b, this molecule has two additional Ig-like domains (one V-type and one C-type) and shows a ubiquitous expression pattern.

## Clinical and Translational Updates

Please contact us via [TechSupport@acrobiosystems.com](mailto:TechSupport@acrobiosystems.com) if you have any question on this product.