

# Mouse Alpha-Synuclein Protein, His Tag (MALS verified)

Catalog # ALN-M52H6



BIOSYSTEMS  
**Acro**

## Synonym

SNCA,NACP,PARK1,alpha-Synuclein

## Source

Mouse Alpha-Synuclein, His Tag(ALN-M52H6) is expressed from E. coli cells.

It contains AA Met 1 - Ala 140 (Accession # [O55042-1](#)).

Predicted N-terminus: Met

## Molecular Characterization

SNCA(Met 1 - Ala 140)  
O55042-1 Poly-his

This protein carries a polyhistidine tag at the C-terminus.

The protein has a calculated MW of 16.4 kDa. The protein migrates as 19-21 kDa under reducing (R) condition (SDS-PAGE).

## Endotoxin

Less than 1.0 EU per µg by the LAL method.

## Purity

>95% as determined by SDS-PAGE.

>90% as determined by SEC-MALS.

## Formulation

Lyophilized from 0.22 µm filtered solution in 100 mM NaAC, pH7.0 with trehalose as protectant.

Contact us for customized product form or formulation.

## Reconstitution

Please see Certificate of Analysis for specific instructions.

*For best performance, we strongly recommend you to follow the reconstitution protocol provided in the CoA.*

## Storage

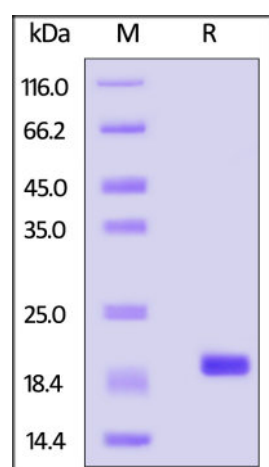
For long term storage, the product should be stored at lyophilized state at -20°C or lower.

*Please avoid repeated freeze-thaw cycles.*

This product is stable after storage at:

- -20°C to -70°C for 12 months in lyophilized state;
- -70°C for 3 months under sterile conditions after reconstitution.

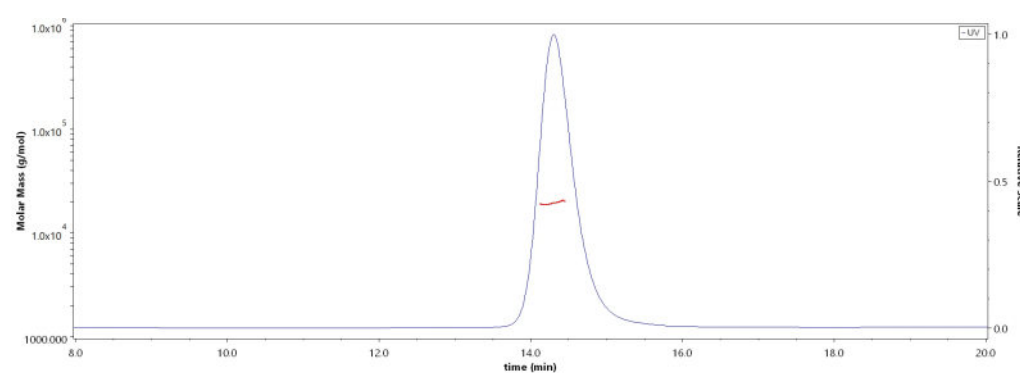
## SDS-PAGE



Mouse Alpha-Synuclein, His Tag on SDS-PAGE under reducing (R) condition. The gel was stained with Coomassie Blue. The purity of the protein is greater than 95%.

## Bioactivity-ELISA

## SEC-MALS



The purity of Mouse Alpha-Synuclein, His Tag (Cat. No. ALN-M52H6) is more than 90% and the molecular weight of this protein is around 15-23 kDa verified by SEC-MALS.

[Report](#)

Discounts, Gifts,  
and more!



➤ [www.acrobiosystems.com](http://www.acrobiosystems.com)

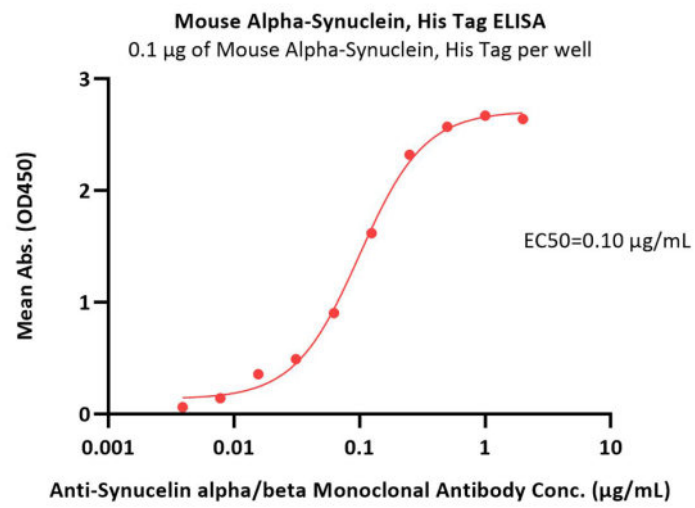
8/5/2024

# Mouse Alpha-Synuclein Protein, His Tag (MALS verified)

Catalog # ALN-M52H6



BIOSYSTEMS  
**Acro**



Immobilized Mouse Alpha-Synuclein, His Tag (Cat. No. ALN-M52H6) at 1  $\mu\text{g/mL}$  (100  $\mu\text{L/well}$ ) can bind Anti-Synuclein alpha/beta Monoclonal Antibody with a linear range of 0.004-0.25  $\mu\text{g/mL}$  (QC tested).

## Background

Alpha-synuclein is a neuronal protein that plays several roles in synaptic activity such as regulation of synaptic vesicle trafficking and subsequent neurotransmitter release. It acts also as a molecular chaperone in its multimeric membrane-bound state, assisting in the folding of synaptic fusion components called SREs (Soluble NSF Attachment Protein REceptors) at presynaptic plasma membrane in conjunction with cysteine string protein-alpha/DJC5. Abnormalities in alpha-synuclein are implicated in the pathogenesis of Parkinson's disease (PD). Alpha-synuclein is present in Lewy-bodies, the neuropathological hallmark of PD, and the protein and its aggregation have been widely linked to neurotoxic pathways that ultimately lead to neurodegeneration.

## Clinical and Translational Updates

Discounts, Gifts,  
and more!



[www.acrobiosystems.com](http://www.acrobiosystems.com)

8/5/2024